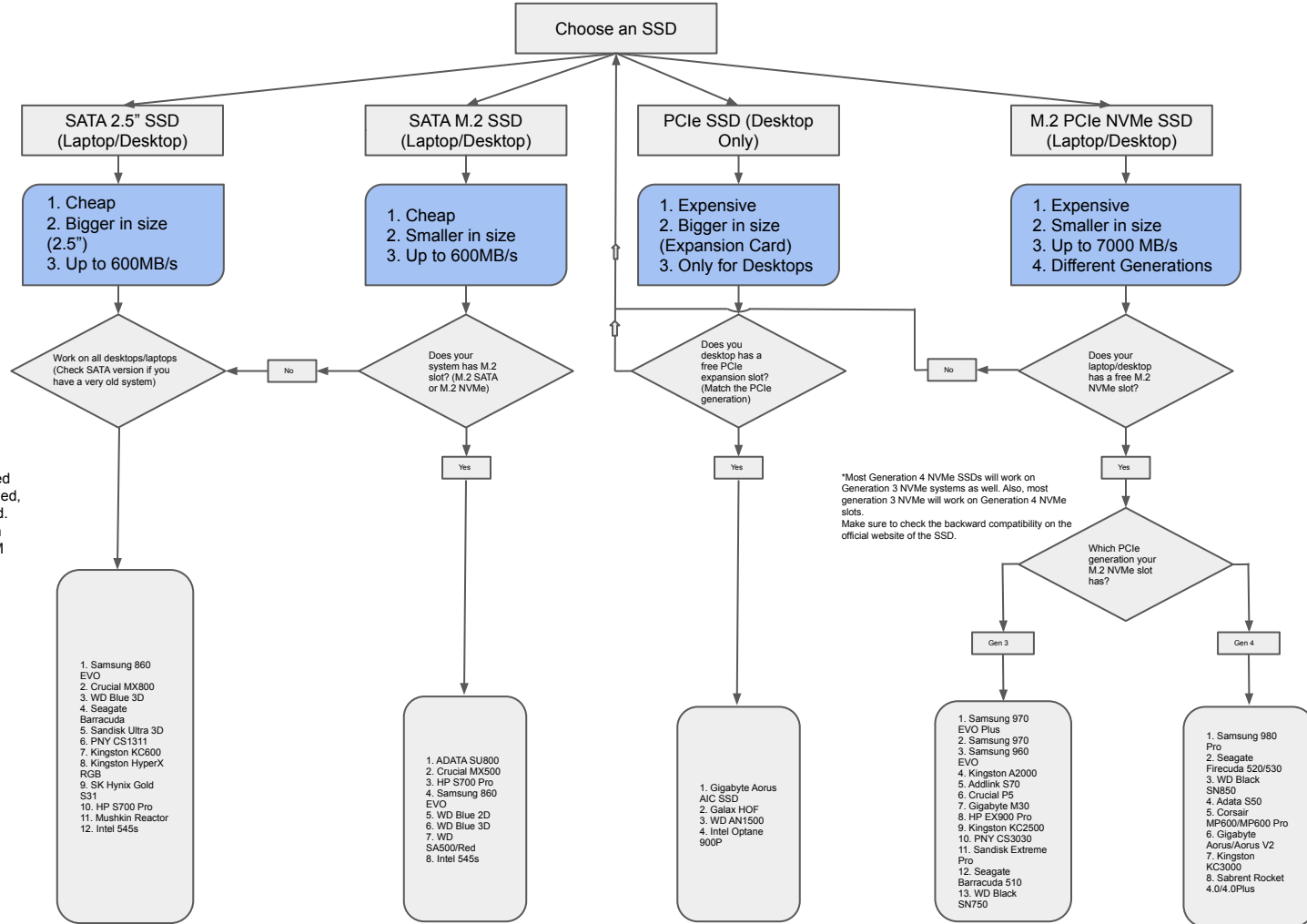


The flowchart recommends some of the top SSDs in the market. These are the most reliable and expensive products. You are always free to choose other SSDs depending on your budgets. Read my [SSD Buying Guide](#) for more.



All SSDs recommended here are well-researched, top-rated, and branded. All of them comes with TLC NAND and DRAM Cache.

*Most Generation 4 NVMe SSDs will work on Generation 3 NVMe systems as well. Also, most generation 3 NVMe will work on Generation 4 NVMe slots. Make sure to check the backward compatibility on the official website of the SSD.